

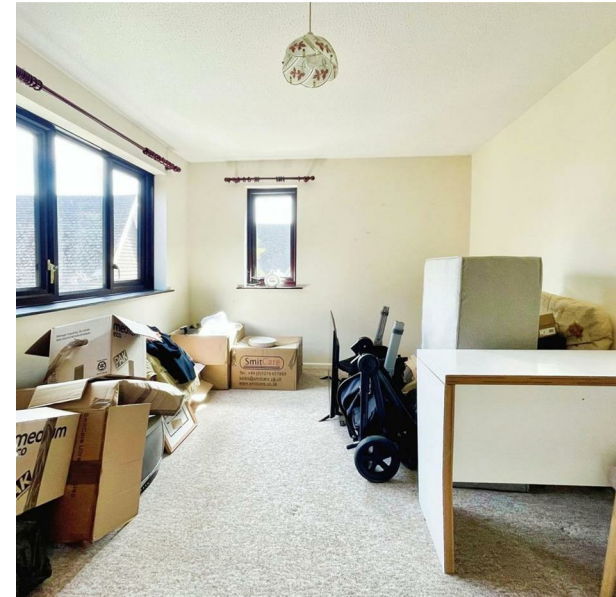
Flat 7, Elizabeth Court High Street, Bembridge, PO35 5SN

Asking Price £180,000

EPC Rating: C Council Tax Band: C

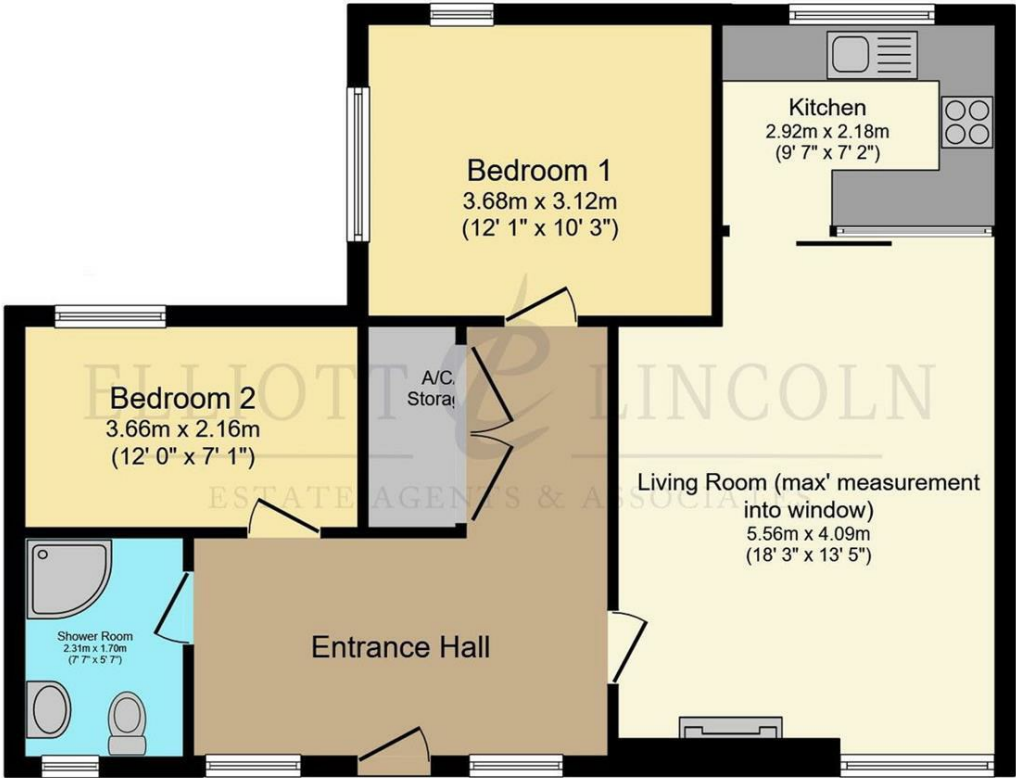
ELLIOTT
LINCOLN
ESTATE AGENTS & ASSOCIATES

Reassuringly familiar, refreshingly new



A delightful two-bedroom first-floor apartment, perfectly positioned in the heart of Bembridge Village within a charming small block development. Spacious, light-filled and ready for immediate occupancy with vacant possession, the property offers well-proportioned accommodation, including a generous hallway with a large walk-in storage cupboard and two comfortable bedrooms. Nicely tucked away yet just moments from the village bakery, butchers, supermarkets, pubs, restaurants, sailing clubs and local bus routes, this is an ideal home, coastal retreat or low-maintenance investment. Beautiful beaches and scenic countryside walks are also within easy reach. Further benefits include a share of the freehold, allocated parking, visitors' parking and access to a communal garden, adding both convenience and lifestyle appeal in one of Bembridge's most sought-after village settings.

Call or WhatsApp: 01983 642622
office@elliottlincoln.co.uk
www.elliottlincoln.co.uk



TOTAL: 69.3 m² (746 sq.ft.)

This floor plan is for illustrative purposes only. It is not drawn to scale. Any measurements, floor areas (including any total floor area), openings and orientations are approximate. No details are guaranteed, they cannot be relied upon for any purpose and do not form any part of any agreement. No liability is taken for any error, omission or misstatement. A party must rely upon its own inspection(s). Powered by www.Propertybox.io

Energy Efficiency Rating		Current	Potential
Very energy efficient - lower running costs			
(92 plus) A			
(81-91) B			
(69-80) C		71	79
(55-68) D			
(39-54) E			
(21-38) F			
(1-20) G			
Not energy efficient - higher running costs			
England & Wales		EU Directive 2002/91/EC	